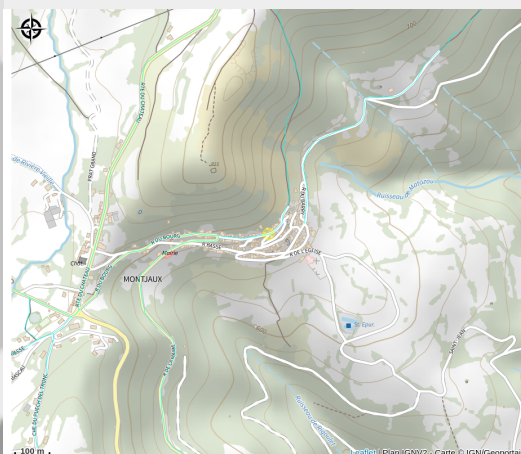


Gîte Turriere Lydie

Des Rases du Tarn aux Lacs du Lévézou



Infos pratiques

Catégorie : Où dormir ?

Type : Meublés et gîtes

A detailed topographic map of the Montjaux area in France. The map features brown contour lines indicating elevation, with labels such as 600, 700, and 821. A network of roads is shown, including R DU CHATEAU, R DU BOURG, R BASSE, R DE L'EGLISE, R DE LA MAIRIE, and R DU PUECH DEL TRONC. Several water bodies are depicted, including the Ruisseau de Matazou, Ruisseau de Rigoulet, and the Che du Puech del Tronc. The town of Montjaux is centrally located, with a red dot marking the 'Mairie' (town hall). Other landmarks include 'St. Epur.' and 'PRAT GRAND'. A scale bar at the bottom left indicates 100 meters. The map is credited to Leaflet | Plan IGNV2 - Carte © IGN/Geoportail.

Toutes les informations pratiques

Informations pratiques

Fiche mise à jour par OFFICE TOURISME DU PAYS DE LA MUSE ET RASPES DU TARN
le 02/02/2024

Contact

Candas
12490 MONTJAUX
jeansoleil34@mac.com